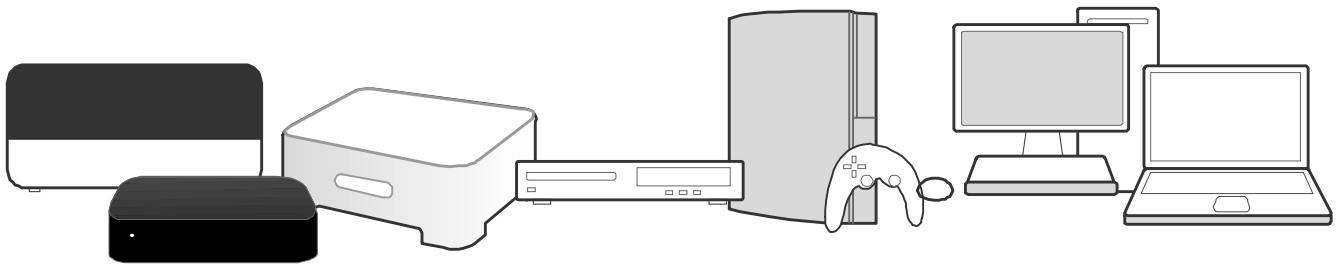
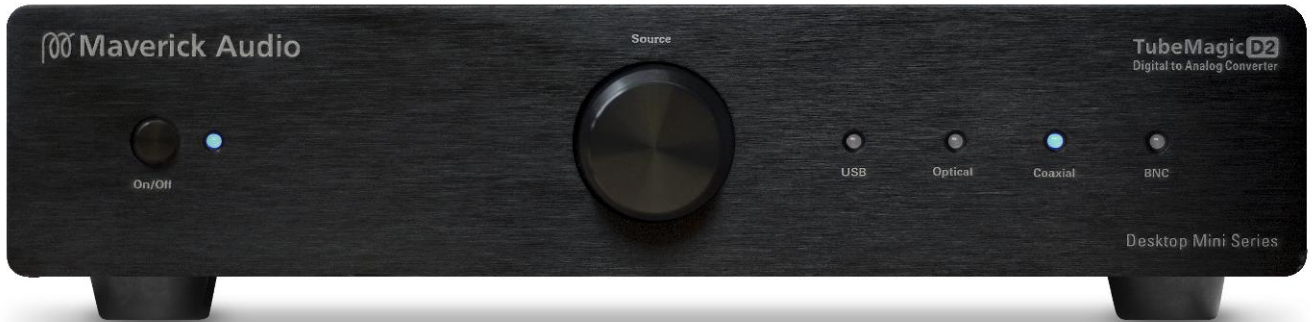
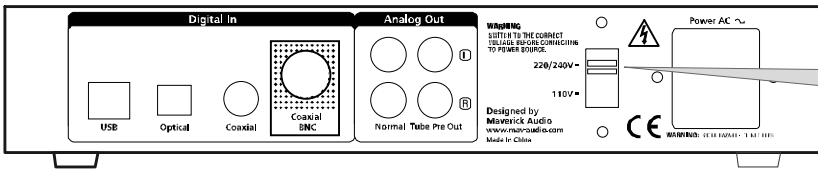


# Quick Start Guide



**1** Make sure the voltage setting is correct



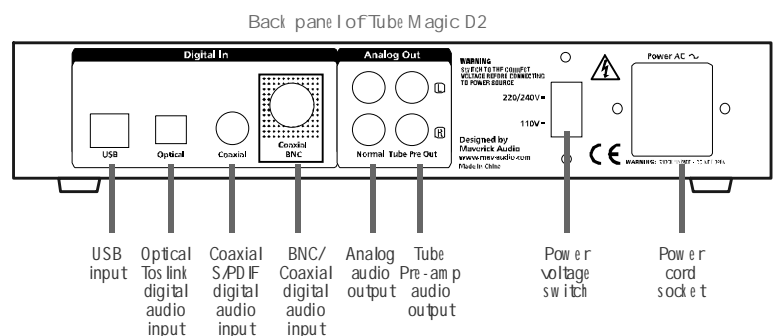
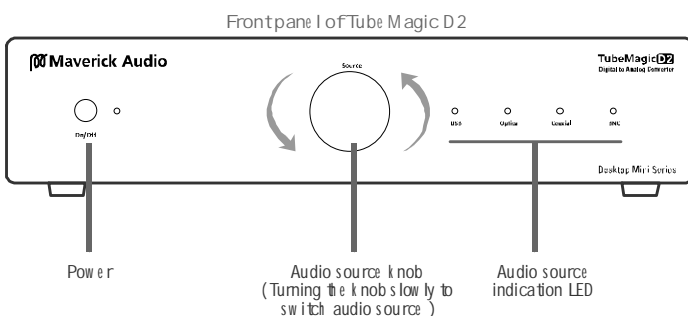
Back panel of Tube Magic D2 DAC

Please check if the voltage setting on the back panel is set to the correct one. It will be either 110V or 220/240V depending on the country. Wrong voltage setting will damage the DAC.

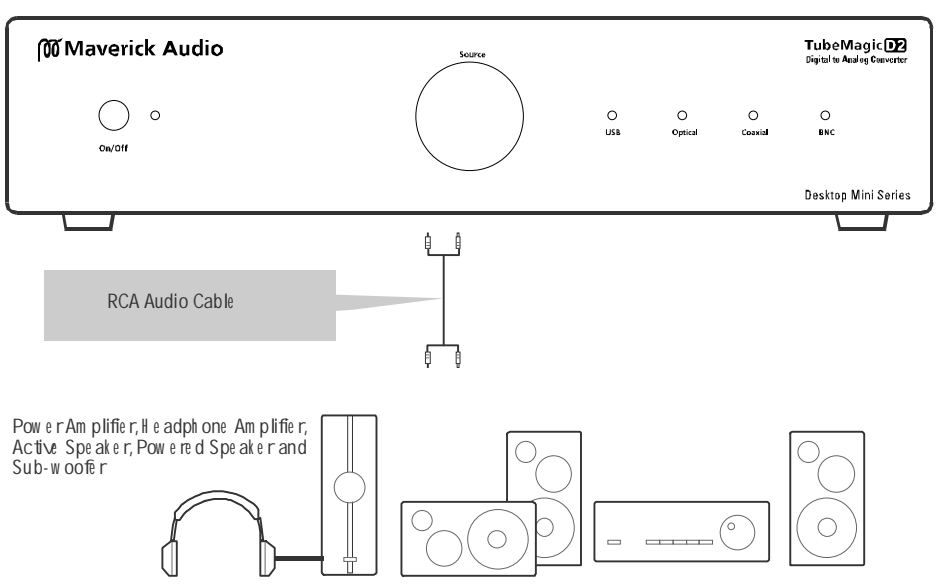
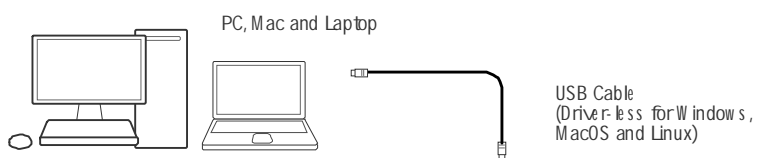
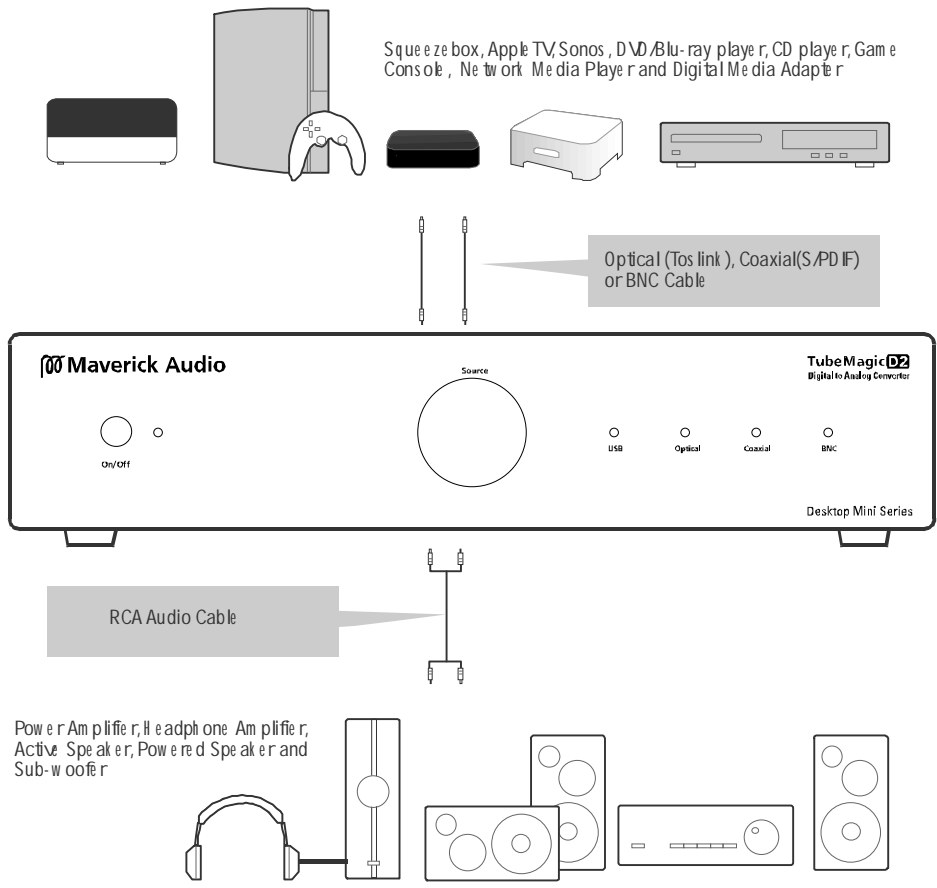
**2** Check what's included:



**3** Front panel controls and back panel inputs/outputs



**4 How to connect Tube Magic D2 DAC into your audio setup**



**5 Need help?**

Visit us at <http://www.mav.audio.com/base/support> for knowledge base or contact support via submitting a ticket